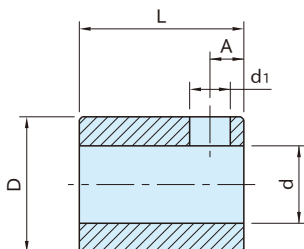


STS

SHAFT SLEEVES



Type	Body
STS	Steel (S45C) Black oxide finish
STS-S	Steel (SUM22L) Black oxide finish
STS-DK	
STS-A	
STS-S-SUS	SUS303 stainless steel
STS-SUS	

Part numbers in boldtext are in-stock items, the others are available on request.

Part Number	D (f7)	d (H7)	L	A	d ₁	Weight (g)	Proper Indicators
STS- 6S	14	6	17	2.8	4.2	16	SDP-04 DE04
STS- 8S		8				14	
STS-10S		10				9	
STS-12S		12				5	
STS-10S-SUS	14	10	17	2.8	4.2	9	SDP-04-S (On Request)
STS-12S-SUS		12				5	
STS- 8DK	14	8	20	3	5.2	16	DK01F DK208,209
STS-10DK		10				10	
STS-12DK		12				6	
STS-12	20	12	20	3.8	5.5	31	SDP-05 SDP-08 SDP-09-N
STS-14		14				25	
STS-15		15				21	
STS-16		*)				17	
STS-12-SUS	20	12	20	3.8	5.5	31	SDP-09-NS (On Request)
STS-14-SUS		14				25	
STS-15-SUS		15				21	
STS-16-SUS		16				17	
STS-12A	30	12	30	4	5.5	135	SDP-10 DE10 DEP10
STS-14A		14				125	
STS-15A		15				120	
STS-16A		16				115	
STS-18	30	18	30	4	5.5	106	
STS-20		20				92	
STS-22		22				77	
STS-25		25				50	

Feature

- Perfect for mounting adaptation to smaller spindle diameters.
- Custom sleeves are available on request.

Supplied with

1 of hex-socket setscrew

Notes

- *) The tolerance of **STS**12 – 16 is H9.
- **) Stainless steel Shaft Sleeves come with stainless steel setscrew.
- ***) **STS-A** and **STS**18 – 25 comes with two setscrews(M4 and M5). Use suitable size for indicator.