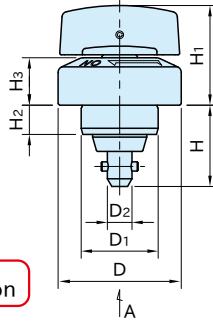
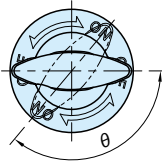
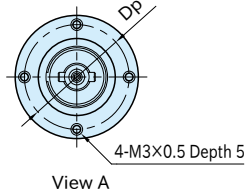


# CP723

# ONE-TOUCH FLEX LOCATOR CLAMPERS (Knob)



Body / Shank	Tapered Pin	Knob	Pin
SCM440 steel Black oxide finished	SCM440 steel Nitrocarburized	SCS13 stainless steel (Equivalent to SUS304)	SUS304 stainless steel



★ **Key Point**  
Space saving operation

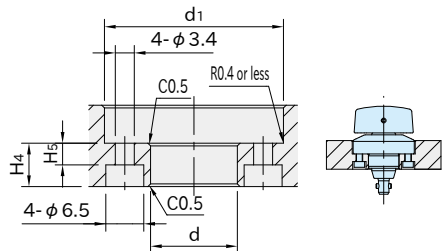
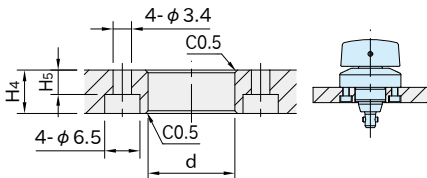
Part Number	D <sub>1</sub> (g6)	H <sub>2</sub>	D	H <sub>1</sub>	H <sub>3</sub>	D <sub>2</sub>	H	θ	D <sub>p</sub>
<b>CP723-0632R-04</b>	16	7.5	32	27	12	5.5	22	120°	25.5
<b>CP723-0840R-06</b>	25	9.5	40	32	15.5	8	26	130°	34

Part Number	Clamping Force(N)	Lifting Force (N) *	Weight (g)	One-Touch Flex Locator Bushing
<b>CP723-0632R-04</b>	350	30	96	CP727-0632R
<b>CP723-0840R-06</b>	600	100	211	CP727-0840R

\*) The lifting force is the power of the inner spring of the body to push up the movable tapered pin.  
For maximum loading weight and locating repeatability, see How To Use ONE-TOUCH FLEX LOCATORS (Handle / Knob).

## How To Use

### ■ Mounting Hole Dimension



Part Number	d (H7)	H <sub>4</sub> (±0.05)	d <sub>1</sub>	H <sub>5</sub>
<b>CP723-0632R-04</b>	16	8	33	4
<b>CP723-0840R-06</b>	25	10	41	6

### Supplied With

- [CP723-0632R-04]: Four pieces of hex. socket-head cap screws M3×0.5-8L
- [CP723-0840R-06]: Four pieces of hex. socket-head cap screws M3×0.5-10L

### Reference

How To Use ONE-TOUCH FLEX LOCATORS (Handle / Knob)