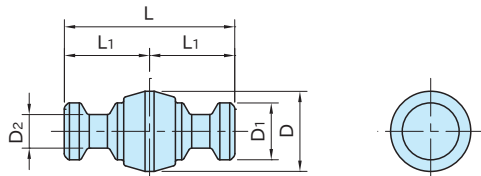


CP158

DOUBLE TAPERED CLAMPING PINS



Body

SCM435 steel
Quenched and tempered
Black oxide finished

Part Number	D	L	D ₁	D ₂	L ₁	Weight (g)	CLAMPING MODULES
CP158-08001	15.5	33	11	6.5	16.5	24	CP150-08040, CP151-08080, CP152-08050
CP158-12001	24.5	50	16	9.5	25	85	CP150-12063, CP151-12125, CP152-12080
CP158-16001	31.5	66	21	13	33	190	CP150-16080, CP151-16160, CP152-16100

How To Use

Can be used as a coupling for [CP151](#) Clamping Module (Double).

<Locating Repeatability is 0.2>

